

# *The Cowshed*

Mpumalanga's best kept secret!







# The Cowshed

**Mpumalanga's best kept secret!**

## **The Cowshed, Wickedly Indulgent Country Living**

Deep within the folds of the Steenkamp Mountains lies one of Mpumalanga's best kept secrets, The Cowshed, a bastion of traditional country living, old-style hospitality and an idyllic pastoral retreat.

Located on the family farm of Wilsonia, The Cowshed provides visitors with the opportunity to enjoy the finer elements of country living - languid days which melt seamlessly into one another, pristine views, fresh air and a wide variety of exciting outdoor activities.

With an emphasis on comfort and African chic, The Cowshed embodies the very essence of the spectacular, the sublime and the truly remarkable. In the valley, serenity is a way of life, not just wishful thinking.

Web: [www.thecowshed.co.za](http://www.thecowshed.co.za)



Ek slaap in die rus van die  
eeue gesus  
Ongesien ongehoord

# The Cowshed

Mpumalanga's best kept secret!

## Accommodation In The Cowshed

The Cowshed, built as a house in 1913, was later used as a working cowshed, and has now been restored to its former glory!

Designed around a central living and entertainment area, The Cowshed can accommodate eight people, in four double bedrooms. Each room has its own fully-equipped en-suite bathroom and boasts a private outdoor shower – allowing visitors to surround themselves with the glory of nature.

Web: [www.thecowshed.co.za](http://www.thecowshed.co.za)









*The Cowshed*

Mpumalanga's best kept secret!



## Accommodation In The Boarding House

Sleeping sixteen people in eight double rooms, the Boarding House provides an ideal accommodation solution for large parties of guests.

Each room has been individually themed, using nostalgic remnants of the past, leaving guests with a unique, retro experience of yesteryear. As with all accommodation on the farm, the rooms have been designed with comfort in mind and feature fully-equipped en-suite bathrooms, complete with private outdoor showers.

The Boarding House has a splendid central farm-style stoep which provides guests with the perfect venue for socialising and relaxing.

Web: [www.thecowshed.co.za](http://www.thecowshed.co.za)







# The Cowshed

Mpumalanga's best kept secret!

## Accommodation In The Farmhouse

Originally a working farmhouse, this building has long since shrugged off its dirty boots and farming equipment in favour of a living space designed for leisure.

With an expansive, covered farm-style stoep, the Farmhouse sleeps seven, in three double rooms, and one single room. Each room features an en-suite bathroom, complete with a private outdoor shower.

The Farmhouse meets all your entertainment needs, including beautifully-crafted braai areas, a fully-equipped kitchen, fireplaces (indoors and on the stoep), DSTV and a sound system.







# The Cowshed

**Mpumalanga's best kept secret!**

## **Weddings and Conferences**

Wilsonia offers a truly unique wedding experience, with wedding packages individually tailored to reflect the personalities of both the bride and the groom. Flexibility is key to giving our clients a truly memorable wedding experience.

Receptions are held in the Old Shed, with its shabby chic white floors, wire and crystal chandeliers, and our resident pair of barn owls. The Shed, which accommodates up to 120 people, provides an unrivalled combination of rustic ambiance and memories of yesteryear.

To date our ceremonies have been noted for their innovative style and originality, with a focus on the unusual and inspiring!

If you are looking for a venue that is fabulous and unsurpassed for your special function; be it an elegant event, business meeting, conference or a themed party, Wilsonia offers you the perfect venue solution. We also boast an experienced, well-organised team, who will take care of all your organisational requirements.

For more information feel free to contact Zaskia on (011) 466 2769 or 082 922 1986

**Web: [www.thecowshed.co.za](http://www.thecowshed.co.za)**







# The Cowshed

Mpumalanga's best kept secret!

## Things To Do In The Badfontein Valley

### Fly Fishing

It goes without saying that fly fishing on the farm and the surrounding areas is nothing short of superb. With bass and trout lurking in almost every stretch of water in the region, anglers can look forward to some exhilarating fishing with the long rod.

### Horse Riding

Horse riding trails for beginners and pros alike, can be organised through one of our neighbouring farms, giving visitors the perfect opportunity to explore the countryside. Rides generally last from one to two hours and can be organised through your hosts on the farm.

### The Fine Art Of Chilling Out

The area is well suited to long lazy walks, hanging out on the verandah, sipping coffee, reading books, and watching the resident herd of Nguni cattle grazing at your back door.



# The Cowshed

Mpumalanga's best kept secret!

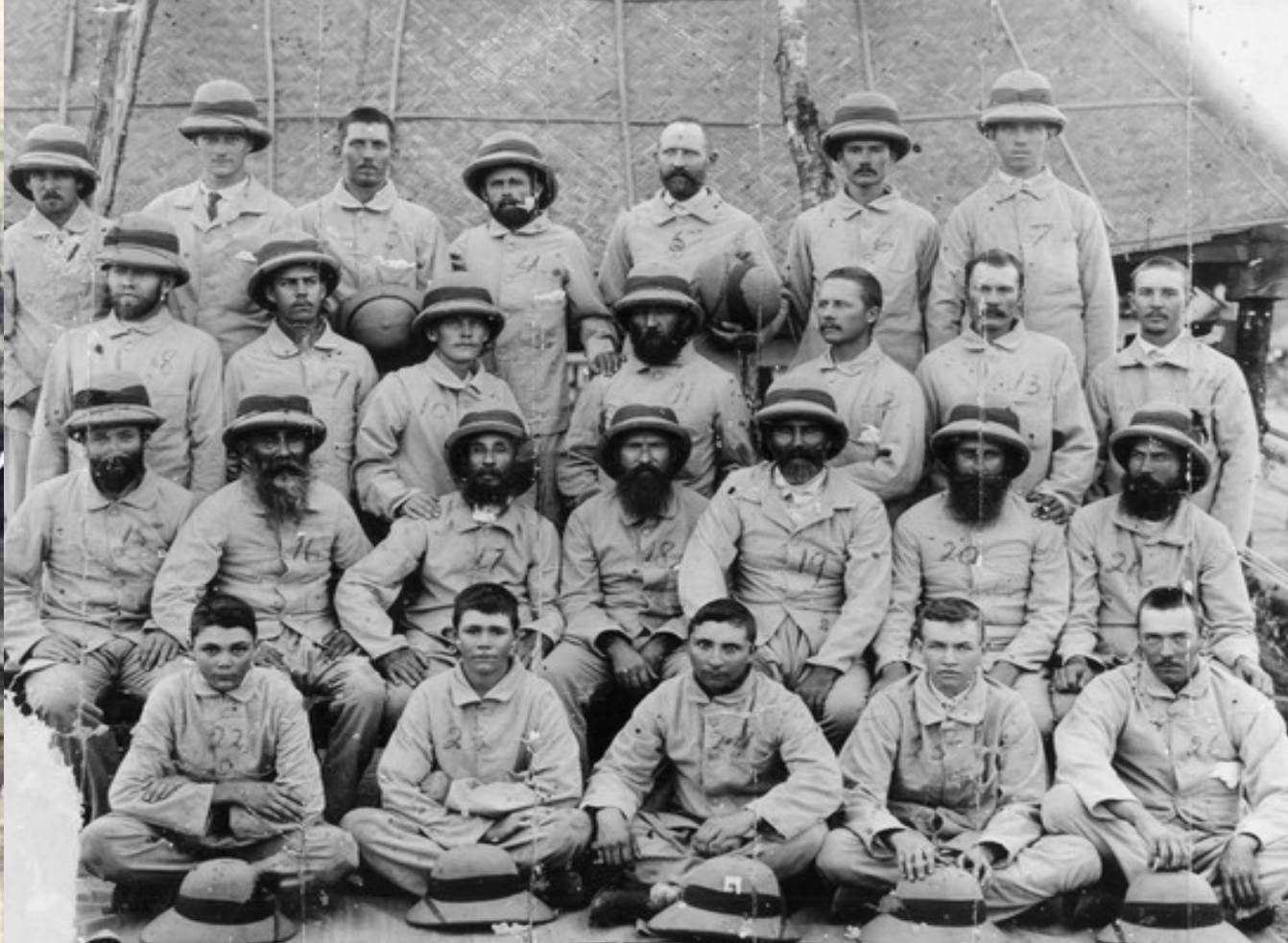
## Things To Do In The Badfontein Valley

### Game

Game is abundant on the farm, with herds of eland, blesbok and black wildebeest roaming wild. Wilsonia also boasts an abundance of bird life, with frequent sightings of bald ibis and blue cranes.

### Paragliding

The Valley is home to an active paragliding club. Tandem flights can be arranged for beginners; while more experienced paragliders may take to the skies solo. Please speak to your hosts if you would like them to organise a paragliding experience for you.



# The Cowshed

**Mpumalanga's best kept secret!**

## **For The History Buffs...**


The Cowshed is the perfect launching pad to explore the Badfontein Valley's rich history. With breathtaking scenery as far as the eye can see, it's almost impossible to imagine the area as anything other than an idyllic holiday destination. However, if you start to scratch away at the rustic charm and delve deep into the patina of the area, it soon becomes apparent that the quiet tourist spots of today were once bloody battlefields mired in political intrigue, feats of bravery and tragic loss of life.

The area is also renowned for historical artifacts and archaeological sites which date back to the Iron Age, including the famed Lydenburg Heads.

To truly connect and engage with the rich history that the region has to offer, you can't do any better than taking a tour with Marion Moir of Cottonwood tours. Ms Moir provides a unique, unbiased and informed perspective into the history which envelops the region and will tailor tours to suit the specific areas of interest of her guests.

A gifted orator, Ms Moir will beguile you with tales of pain, compassion, intrigue, cover-ups, humour and horror, while touring the scenes of bygone battles, cairns to the fallen, and monuments to the battles themselves.



A landscape photograph of a farm. In the foreground, there is a lush green grassy area with a wooden fence post. To the right, a calm pond reflects the sky. The middle ground shows a wide, flat field with some scattered trees and a distant mountain range under a cloudy, overcast sky.

The Cow Shed Conserving nature  
Printed on 100% recycled paper

Join The Cowshed Newsletter to keep up-to-date with all the happenings at Wilsonia Farm and the surrounding area. For more info view our website [www.thecowshed.co.za](http://www.thecowshed.co.za)

# The Cowshed

Mpumalanga's best kept secret!

## Contact Us:

Give us a call :  
Di and Paul Fallone on

Tel:           013 235 3536  
Cell:           072 243 2429  
Email:        thecowshed@vodamail.co.za  
Web:           www.thecowshed.co.za

